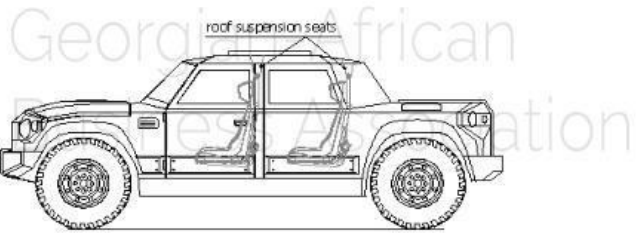
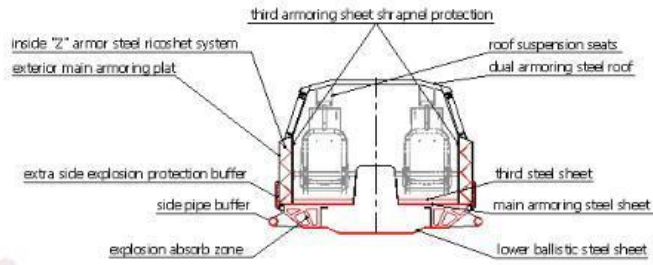
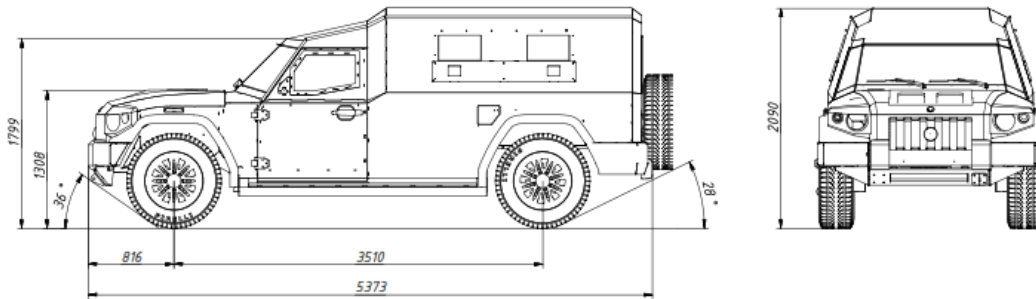
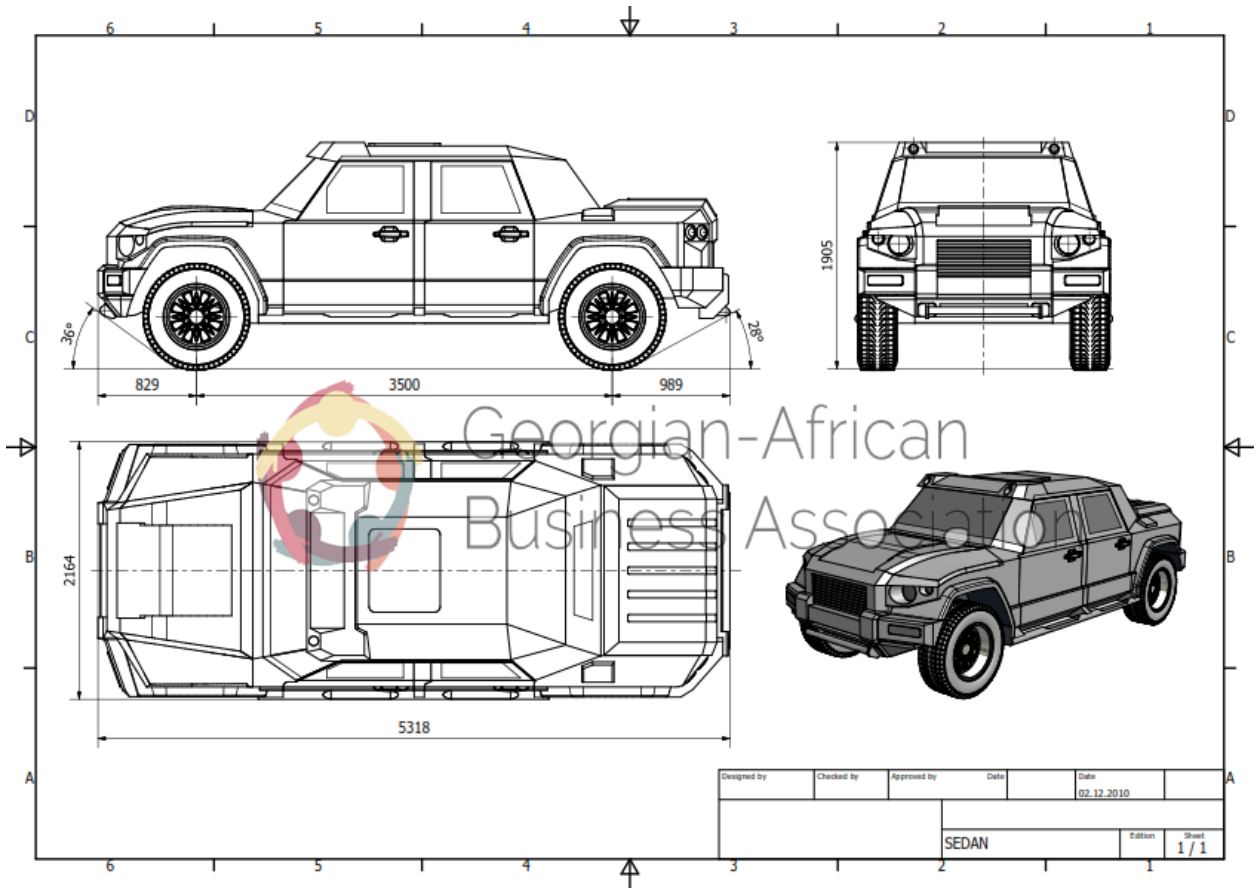


**COMBAT ARMORING SCHEME**  
**Protection by NATO STANAG level 3**  
Anti mine dual protection system

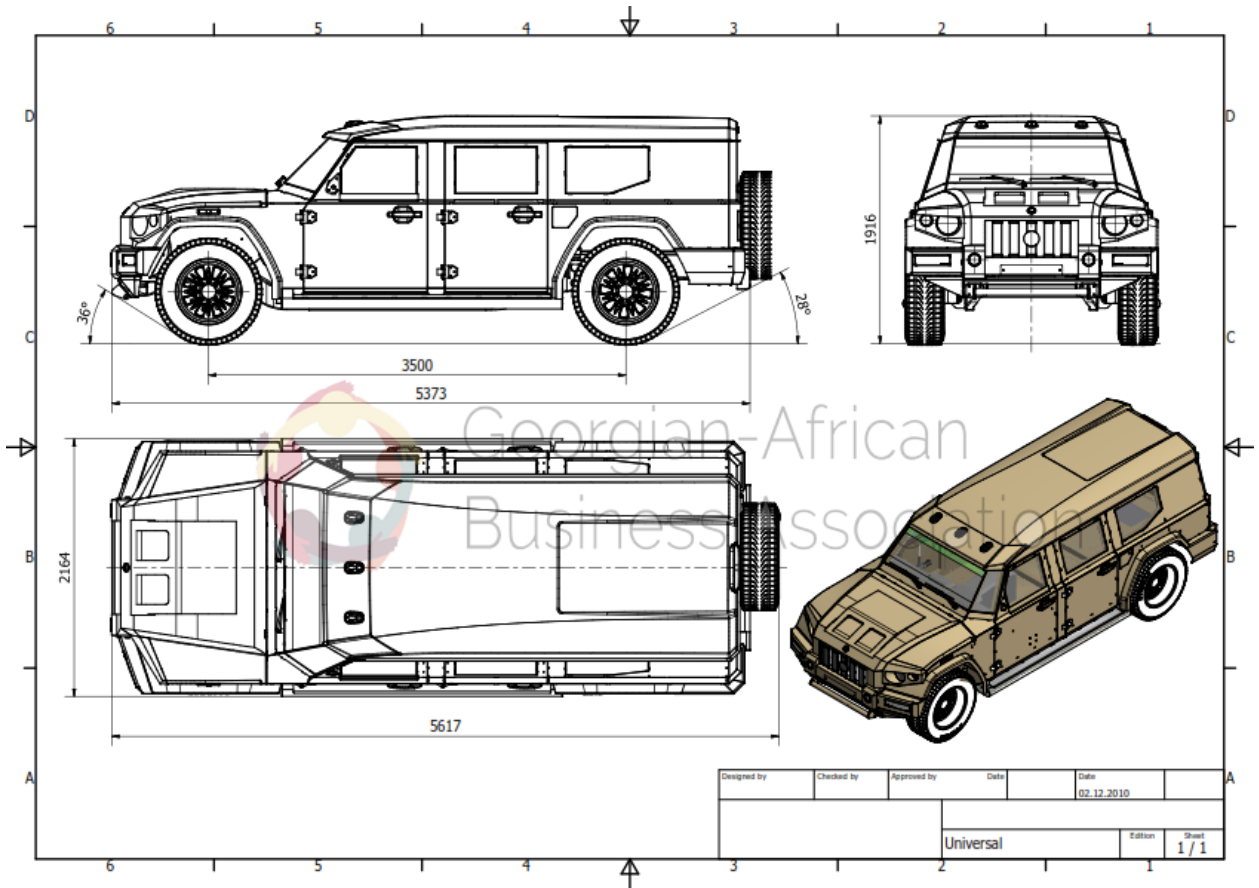




Georgian-African  
Business Association



Designed by	Checked by	Approved by	Date	Date
				02.12.2010
			SEDAN	Edition 1 / 1



Designed by	Checked by	Approved by	Date	Date
				02.12.2010
			Universal	Edition 1 / 1



# Georgian-African Business Association

## KOMBAT

**T-98 MP10P PRCV (Police Riot Control Vehicle)**

TRANSPORT POSITION



THE FIRST POSITION - DEPLOYMENT OF THE SHIELD



THE SECOND POSITION - IS WORKING PROVISION OF THE SHIELD



THE THIRD POSITION - BOARD LOCK SHIELD ON THE BODY



## KOMBAT



**T-98 MP10**



**T-98 MP10S**



KOMBAT T98- M	
Ruffy Peugeot Armored vehicle	
Manufactured Central Armoring Group (MCCAG)	
Factory location: Tbilisi, GEORGIA	
Model	T98
Year	2017, 2018, 2019
Weight (empty)	2000 kg (4400 lbs)
Weight (loaded)	2500 kg (5500 lbs)
Capacity	2
Engine	2000 cc, 160 HP, 10000 RPM
Transmission	5-speed manual
Drive	4x4
Speed	180 km/h (112 mph)
Dimensions	4800 x 1900 x 1900 mm
Wheelbase	2800 mm
Ground clearance	200 mm
Armor	Level 3 (NIJ) / Level 4 (DIN)
Protection	Ball, Fragment, IED, Mine, Fire, NBC
Armament	Optional
Price (unit)	250000 USD (approx.)



## Georgian-African Business Association

### KOMBAT T98 PERSONAL USE MULTY FUNCTION VEHICLE

2015 model year

#### Body Type

- 4 or 5 seats 4 doors Hard Top powered trunk open/closes dual steel full welded body  
Reinforced fiber glass hood, trunk, front face cover and side moulding
- 4 or 5 or 6 (3 line) seats, 5 doors St. Wagon dual steel full welded body  
Reinforced fiber glass hood, roof surface side moulding and front face cover

#### ARMORING (Europe standard)

- Light version - reinforced type crew compartment equivalent B2/3 armor level
- Base - B6 level full armoring crew compartment, dual flooring protection
- Add on version protection - B7 level full armoring crew compartment, dual flooring protection
- Special protection - 3/4 level STANAG NATO limited add- on explosion absorb  
Composite steel- ceramic- steel full welded monocoque body

#### Engine Options

- DURAMAX 6.6L Turbo Diesel V8 397HP@3000 (B20-Diesel compatible)  
410HP@3000 low resistant inlet& outlet
- Vortec 6.0L Variable Valve Timing SFI V8 360HP@5400



reprogrammed 420HP@5600 low resistant inlet& outlet ,

600HP@4800 Supercharger @ intercooler

**Cooling**, external engine oil cooler, heavy-duty air-to-oil, integral to driver side of radiator tank

**Engine block heater (option)**

**Exhaust**, aluminized stainless-steel muffler and tailpipe

**Air cleaner**, high-capacity

**Alternator**, 160 amps

**Transmission**,

6-speed automatic, heavy-duty, electronically controlled with overdrive and tow/haul mode (requires Vortec 6.0 V8 engine)

**Cooling**, auxiliary external transmission oil cooler, heavy duty air-to-oil

**Transfer Case**, electronic shift with rotary-dial controls (4WD models only)

**Brake Controller**, integrated trailer

**Brakes**, 4-wheel antilock, 4-wheel disc

**Differential**, heavy duty automatic locking rear

**StabiliTrak**, stability control system with Proactive Roll Avoidance

**Suspension**, front, independent torsion-bar

rear - multi-leaf springs

**Suspension Package**, Handling/Trailer, heavy-duty includes 35mm twin tube shock absorbers and 36mm front stabilizer bar

**Turning diameter**, curb-to-curb, ft - 13,5 m.

**Fuel Tank Capacity** - 105 (140) l

**Filler neck remote controlled by power** (for Hard Top models only)

**Interior & Convenience**



**Air conditioning**, dual-zone automatic climate control with individual climate settings for driver and right-front passenger

**Bluetooth for phone**, personal cell phone connectivity to vehicle audio system

**Console**, floor with storage compartment, 2 auxiliary power outlets and dual cup holders

**Cruise control**, electronic with set and resume speed, located on steering wheel

**Cup holders**, front (Also includes rear if required as option)

**Defogger**, rear-window, electric (Not available with rear-sliding window)

**Door locks**, power, includes Remote Keyless Entry

**Driver Information Center**, with odometer, trip odometer and message center (monitors numerous systems depending on vehicle equipment level including low fuel, turn signal "on", transmission temperature and oil change notification). includes 8-point compass and outside temperature

**Instrumentation**, analog, includes speedometer, tachometer, fuel level, engine temperature, voltmeter, and oil pressure indicator

**Keyless entry**, remote, includes two transmitters, panic button, and content theft alarm

**Lighting**, interior, with dome and reading lights, illuminated entry feature, and backlit instrument panel switches

**Mirror**, inside rearview, manual day/night

, inside rearview auto-dimming

**On Star®†**, 6 months of Directions and Connections plan, includes Automatic Crash Response, Emergency Services, Crisis Assist, Stolen Vehicle Assistance including Remote Ignition Block, Remote Door Unlock (requires power locks), Turn-by-Turn Navigation with Destination Download (requires navigation radio) and OnStar® eNav (where available), On Star® Vehicle Diagnostics, Roadside Assistance, Remote Horn and Lights, and Hands Free Calling

**Rearview camera system**, images appear on Navigation screen for units equipped with AM/FM stereo with MP3 compatible CD player and multimedia navigation or AM/FM stereo with MP3 compatible CD/DVD player and DVD-based navigation. For units not equipped with Navigation systems images will appear within rearview mirror

**Remote Keyless Entry**, with 2 transmitters, panic button and content theft alarm

**Steering column**, tilt-wheel, adjustable with brake/transmission interlock

**Steering wheel**, leather-wrapped with theft-deterrent locking feature





**-mounted audio controls**

**Tire Pressure Monitoring System**, does not include spare tire

**Windows**, front, power sliding

**Front seat, buckets**, includes 10-way power driver and front passenger seat adjusters including 2-way power lumbar control, heated seat cushions and seatbacks, 2-position driver memory, adjustable outboard head restraints, floor console and storage pockets

**Rear seat, bench**, (folds up), full width, folding, 3-passenger

2 separate seats by customer requirement order

**Seat trim** hi quality lather (customer request design)

**EXTERIOR FEATURE**

**Assist steps** stainless or body colored

**Bumper, front** body integrated heavy duty, steel body colored

**rear** frame mounted heavy duty, steel body colored

**Daytime Running Lamps**, with automatic exterior lamp control

**Fog lamps**, front, halogen

**Headlamps**, dual halogen (xenon option), includes automatic exterior lamp control and flash-to-pass feature

**Lamps**, Smoked Amber roof marker

**Mirrors**, side, heated, power-adjustable, power-folding and driver-side auto-dimming with integrated turn signal indicators and curb-tilt, body-colored or black

**Glass**, Solar-Ray deep-tinted (all windows except light-tinted glass on windshield, driver, and front passenger-side) armed (reinforced), windshield and back glass power defogger and heated

**Wheels & Tire**

Aluminum alloy 17" wheels or 20" customer design

315/70R17 A/T or 320/60R20 A/T (brand & tread by customer requirement)



### Safety

**Air bags**, frontal, driver and right-front passenger

**Brakes**, 4-wheel antilock (ABC), 4-wheel disc

**Daytime running lamps**, includes automatic exterior lamp control

**StabiliTrak**, stability control system with Proactive Roll Avoidance

**On Star**<sup>®†</sup>, Automatic Crash Response, Emergency Services, Crisis Assist, Stolen Vehicle Assistance including Remote Ignition Block, Remote Door Unlock (requires power locks), Turn-by-Turn Navigation with Destination Download (requires navigation radio) and On Star <sup>®</sup> eNav (where available), On Star <sup>®</sup> Vehicle Diagnostics, Roadside Assistance, Remote Horn and Lights, and Hands Free Calling.

### Dimension St. Wagon

<b>Wheelbase</b>	<b>3500mm</b>
<b>Overall length</b>	<b>5373/5617mm</b>
<b>Overall height</b>	<b>1916mm</b>
<b>Body width</b>	<b>2164mm</b>
<b>Ground clearance</b>	<b>320/340mm</b>

### Dimension Hard Top

<b>Wheelbase</b>	<b>3500mm</b>
<b>Overall length</b>	<b>5318mm</b>
<b>Overall height</b>	<b>1905mm</b>
<b>Body width</b>	<b>2164mm</b>
<b>Ground clearance</b>	<b>320/340mm</b>

### Weight Capacities

(Light version)

**Gross Vehicle Weight Rating (GVWR)**, kg<sup>§</sup>, - 4600 /4969 Hard Top/ St. Wagon

**Curb weight**, lbs, DURAMAX diesel engine (4WD) - 3820 (3980 for St. Wagon)



**Curb weight, lbs, gasoline engine (4WD) - 3450 ( 3610 for St/ Wagon)**

**Available (options)**

**Brambo performers Heavy Duty brake system front & rear**

**Heavy Duty winch front & rear**

**Customer make interior**

**Parking assist front & rear cameras**

**Record cameras**

**rear view camera**

**Navigator GPS (map loaded by requirement)**

**Engine self- inclusive heater remount controlled**

**Crew compartment independent heater**

**220 or120 volt on passenger place**

**Roof suspended screen**

**Entertainment by customer requirement**

**On a board personnel computer**



## **Combat armoring personal vehicle (APV)**

**5/4 passenger**

Base specifications 2015

- Engine: GM Vortec 6000 V8 400 HP

Duramax Diesel 6600 V8 395 HP

- Transmission : Allison 6-speed automatic overdrive;

electric shift 2 speed, 4WD transfer case .

- 2 Air bags, ABS, dual-zone climate control, cruise control, driver information center, custom leather interior, power front seats, automatic headlamps, AM/FM stereo with CD changer and GPS navigator, power mirrors, remote keyless entry with content theft alarm, On- Star safe package. On board diagnostic system.(OBD-2)

Cargo area and refueling cap open by power. (for Hard top models only)

Levels of protection and cost (by Euro)



Georgian-African  
Business Association

Magasini 31 tn,  
Tallinn 10138, Estonia

WWW.VICTOR.GE  
INFO@VICTOR.GE

Pro	B2/B3 Hand Gun 9 mm Luger or 357 Magnum, 44 Rem. Magnum	- 216'000
H. Pro	B6+ Rifle 5.56x45 (NATO) 7.62x51 Kalashnikov 7.62	- 246'000
H. Pro. S	B7+ Mash gun FAL (7.62 NATO) Kalashnikov (7.62) Steel Hard Core, AP Rifle SVD (7.62)AP (API)	- 288'000
<b>H. Pro. S (Limited) Ceramic</b>	NATO STANAG ¾ (military application) Shotgun cal 12 (Brenneke SLS) Anti tank rifle V94 (12.7 mm)	- 385'000
	<i>Optional cost (euro)</i>	
	Carbon coating hood, roof deflector and sight panels	2'200
	Long base (wheelbase 3630 mm) (not available for EU)	9'500



## COMBAT ARMORING GROUP

Assembly plant **Tallinn ESTONIA**

Make **KOMBAT** Type **T98 M/P10**

Modification **Armored vehicle B6 level** Category **N2G**

Vehicle Identification number (VIN) **V69193610DE014003**

<b>Dimensions</b>	
Seats	2/8
Length / Wide / Hight	5373 / 2121 / 2120 mm
Wheel base / Axle(s) track front / rear	3500 / 1850 / 1810 mm
Fuel tank capacity	150 l
Tyres front	325/65 R18
Tyres rear	325/65 R18
<b>Masses</b>	
GVWR /Curb weight (incl. driver and 95% of fuel)	5738 / 4280 kg
Max. payload	1458 kg
Max. Mass of trailer braked / unbraked	9000 / 7750 kg
Axle mass front / rear	2540 / 3198 kg
<b>Power plant</b>	
Engine manufacturer	General Motors
Engine type	LMM
Engine description	Vortec 6.0L Variable Valve Timing SFI V8
Power	360HP@5400
Torque	542 Nm @ 4400 rpm
Capacity	5967 cm <sup>3</sup>
Exhaust	3-way catalytic converter, exhaust gas recirculation, positive crankcase ventilation, evaporative collection system, returnless fuel system
<b>Transmission</b>	
Type	Automatic 6 speed Allison 1000
Gear ratios 1/2/3/4/5/6/R	3.10/1.81/1.41/1.00/0.71/0.61(0.6+)/4.49
Final drive ratio / Highspeed	3.73 / 170 km/h
Number of axles / Powered axles	2 / 2

**SPECIAL PRICE OFFER 210 000 EUR**



Georgian-African  
Business Association

Magasini 31 tn,  
Tallinn 10138, Estonia

WWW.VICTOR.GE  
INFO@VICTOR.GE

## COMBAT ARMORING GROUP

Assembly plant **Tallinn ESTONIA**

Make **KOMBAT** Type **T98 M/P10 S**

Modification **Armored vehicle B6 level** Category **N2G**

Vehicle Identification number (VIN) **V69193610DE014002**

<b>Dimensions</b>	
Seats	2/8
Length / Wide / Hight	5373 / 2121 / 2240 mm
Wheel base / Axle(s) track front / rear	3500 / 1850 / 1810 mm
Fuel tank capacity	150 l
Tyres front	325/65 R18
Tyres rear	325/65 R18
<b>Masses</b>	
GVWR /Curb weight (incl. driver and 95% of fuel)	5738 / 5130 kg
Max. payload	608 kg
Max. Mass of trailer braked / unbraked	9000 / 7750 kg
Axle mass front / rear	2540 / 3198 kg
<b>Power plant</b>	
Engine manufacturer	General Motors
Engine type	LMM
Engine description	Vortec 6.0L Variable Valve Timing SFI V8
Power	360HP@5400
Torque	542 Nm @ 4400 rpm
Capacity	5967 cm <sup>3</sup>
Exhaust	3-way catalytic converter, exhaust gas recirculation, positive crankcase ventilation, evaporative collection system, returnless fuel system
<b>Transmission</b>	
Type	Automatic 6 speed Allison 1000
Gear ratios 1/2/3/4/5/6/R	3.10/1.81/1.41/1.00/0.71/0.61(0.6+)/4.49
Final drive ratio / Highspeed	3.73 / 170 km/h
Number of axles / Powered axles	2 / 2

**SPECIAL PRICE OFFER 225 000 EUR**

Magasini 31 tn,  
Tallinn 10138, Estonia

WWW.VICTOR.GE  
INFO@VICTOR.GE



Georgian-African  
Business Association











































